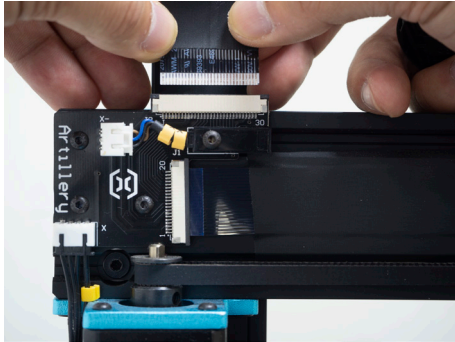


Artillery Sidewinder X1

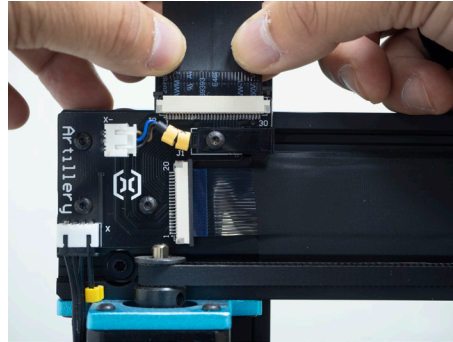


How-to: Properly Connect Flexible Flat Cable (FFC)

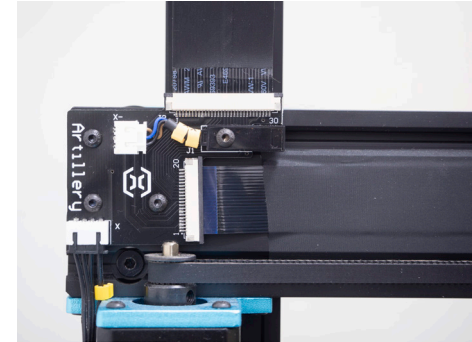
30 Pin FFC to breakout board



1. Align the cable to the connector

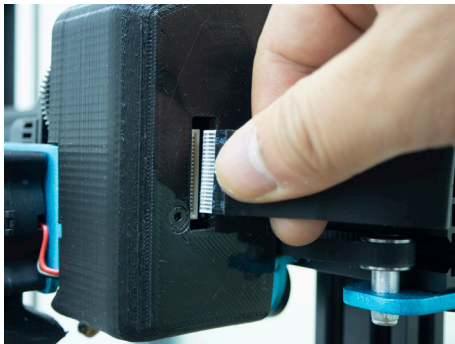


2. Insert the cable **straight** into the connector
(you may need to open the lock on some machines.)



3. Push the cable all the way inside until
no gold finger exposed.
(you may need to close the lock on some machines.)

20 Pin FFC to X-carriage



1. Align the cable to the connector



2. Insert the cable **straight** into the connector



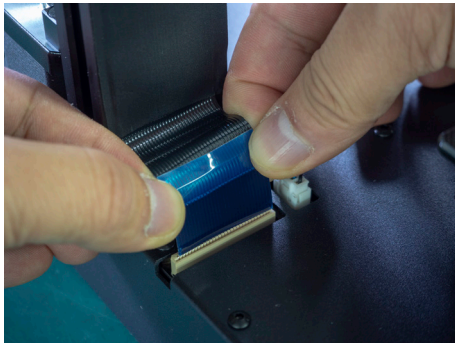
3. Push the cable all the way inside until
no gold finger exposed.

Artillery Sidewinder X1

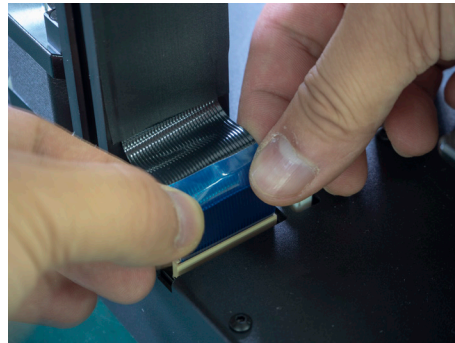


How-to: Properly Connect Flexible Flat Cable (FFC)

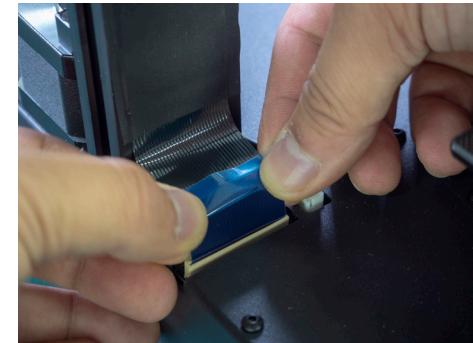
30 Pin FFC to breakout board



1. Align the cable to the connector



2. Insert the cable **straight** into the connector



3. Push the cable all the way inside until no gold finger exposed.